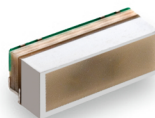


## Precautions for use of Compact Chip LED products

- (1) When adopting the product for mass production, please exchange formal specifications with us.
- (2) Do not reverse-engineer the product including disassemble or analyze without our approval.
- (3) The product is not in conformity to IATF16949 or intended to be used for in-vehicle application. The product is not designed or manufactured to be used for special application (e.g. trains, ships, airplanes, spaceships, submarine repeaters, atomic energy control systems, traffic equipment, combustion equipment, medical devices, and safety devices). We will not guarantee any application suitability for goods like those described above that require special quality and reliability. In cases where the product is used in special applications and it causes extensive property damage, threatens human life or damages the human body, we will not be held liable.
- (4) The specification and appearance of the product may change without notice for improvement, etc.
- (5) This technical information and data is provided for users as is, and we do not guarantee that it is free from errors or defect in technical information and data, or this technical information and data conform to special applications, or this technical information and data does not infringe any rights of the user or third parties other than the user, or any other contents (including changes in contents for improvement of the specification and appearance of the product) thereof.

多色LED Multi-color LED

# CL-421 Series



2.8(L) x  
1.35(W) x 1.0(H)mm

## 特征 Features

1. 同一封装内3色发光  
3 colors emitting from a single package
2. 侧面发光  
Side-lighting type

Introduction

CLILED

Technical note

Multi-color LED

High brightness White LED

General color LED

## ●绝对最大额定值 Absolute Maximum Rating

(Ta 25°C)

产品代码 Product code	Color variation	P*1 (mW)	Pd (mW)	IF (mA)	IFP (mA)	VR (V)	Top (°C)	Tst (°C)
CL-421C4	红色 Red	140	50	20	100*2	4	-25~+80	-30~+85
	绿色 Green		140	30				
	蓝色 Blue		130	30				

\* 1 P表示同时亮灯时的全部的容许损耗。 / \* 2 I<sub>FP</sub>的条件为duty 1/10, 脉冲宽度为0.1msec。

\* 1 P means total value of power dissipation when both colors are on. / \* 2 Conditions for I<sub>FP</sub> are pulse of 1/10 duty and 0.1msec width.

## ●电气·光学特性 Electrical and Optical Characteristics

(Ta 25°C)

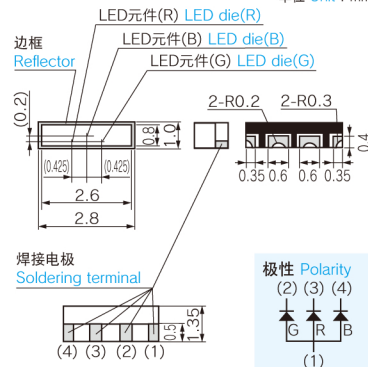
产品代码 Product code	Color variation	VF			λd typ (nm)	Iv*		
		IF (mA)	typ (V)	max (V)		IF (mA)	min (mcd)	typ (mcd)
CL-421C4	红色 Red	20	2.2	2.78	624	20	520	700
	绿色 Green	20	3.45	4.12	530	20	850	1,350
	蓝色 Blue	20	3.2	3.81	470	20	250	400

\* 符合NIST标准 \* Compliant with NIST standards

包装数量 : 3,000个/卷 (φ 180mm) Loaded quantity: 3,000pcs./1 reel (φ 180mm)

## ●外形尺寸图 Outline drawing

单位 Unit : mm



推荐焊接形态  
Recommendable  
soldering pattern

