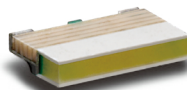


Precautions for use of Compact Chip LED products

- (1) When adopting the product for mass production, please exchange formal specifications with us.
- (2) Do not reverse-engineer the product including disassemble or analyze without our approval.
- (3) The product is not in conformity to IATF16949 or intended to be used for in-vehicle application. The product is not designed or manufactured to be used for special application (e.g. trains, ships, airplanes, spaceships, submarine repeaters, atomic energy control systems, traffic equipment, combustion equipment, medical devices, and safety devices). We will not guarantee any application suitability for goods like those described above that require special quality and reliability. In cases where the product is used in special applications and it causes extensive property damage, threatens human life or damages the human body, we will not be held liable.
- (4) The specification and appearance of the product may change without notice for improvement, etc.
- (5) This technical information and data is provided for users as is, and we do not guarantee that it is free from errors or defect in technical information and data, or this technical information and data conform to special applications, or this technical information and data does not infringe any rights of the user or third parties other than the user, or any other contents (including changes in contents for improvement of the specification and appearance of the product) thereof.

高亮度白色LED High brightness white LED

CL-840S Series



1.8(L) ×
1.0(W) × 0.3(H)mm

●绝对最大额定值 Absolute Maximum Rating*1

(Ta 25°C)

产品代码 Product code	Pd (mW)	IF (mA)	IFP*2 (mA)	VR (V)	Top (°C)	Tst (°C)
CL-840S-WTST	76	20	100	4	-25~+80	-30~+85

*1 1个元件的值。/ *2 IFP的条件为duty 1/10, 脉冲宽度为0.1msec。

*1 The values are based on 1-die performance./ *2 Conditions for IFP are pulse of 1/10 duty and 0.1msec width.

●电气·光学特性 Electrical and Optical Characteristics

(Ta 25°C)

参数 Parameter	Symbol	Conditions	MIN	TYP	MAX	Unit
正向电压 Forward Voltage*1	VF	IF=5mA	—	2.9	3.24	V
反向电流 Reverse Current*1	IR	VR=4V	—	—	2	μA
光强 Luminous Intensity*2	Iv	IF=5mA	127	200	—	mcd
色度坐标 Chromaticity coordinates*3	x, y	IF=5mA		x(±0.02)	y(±0.02)	
			a	0.260	0.199	
			b	0.260	0.264	
			c	0.320	0.369	
			d	0.320	0.304	

*1 1个元件的值。/ *2 符合NIST标准, 是各个元件同时亮灯时的值。/ *3 色度坐标是a、b、c、d所围合的范围。

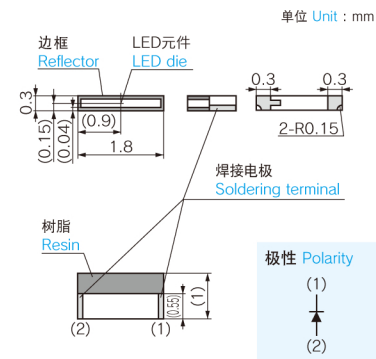
*1 The values are based on 1-die performance./ *2 Compliant with NIST standards. The values are based on the condition that each die lights simultaneously./ *3 Chromaticity coordinates are surrounded by points a, b, c, and d.

包装数量: 5,000个/卷 (φ 180mm) Loaded quantity: 5,000pcs./1 reel (φ 180mm)

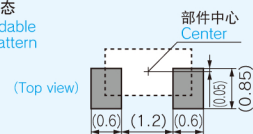
特征 Features

1. 白色LED
White LED
2. 侧面发光, 小型·薄型
Side-lighting, compact/thin type
3. 带反射器
Reflector equipped

●外形尺寸图 Outline drawing



推荐焊接形态
Recommendable
soldering pattern



Introduction

CITILED

Technical
note

Multi-color LED

High brightness
white LED

General color
LED