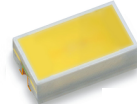


Precautions for use of Compact Chip LED products

- (1) When adopting the product for mass production, please exchange formal specifications with us.
- (2) Do not reverse-engineer the product including disassemble or analyze without our approval.
- (3) The product is not in conformity to IATF16949 or intended to be used for in-vehicle application. The product is not designed or manufactured to be used for special application (e.g. trains, ships, airplanes, spaceships, submarine repeaters, atomic energy control systems, traffic equipment, combustion equipment, medical devices, and safety devices). We will not guarantee any application suitability for goods like those described above that require special quality and reliability. In cases where the product is used in special applications and it causes extensive property damage, threatens human life or damages the human body, we will not be held liable.
- (4) The specification and appearance of the product may change without notice for improvement, etc.
- (5) This technical information and data is provided for users as is, and we do not guarantee that it is free from errors or defect in technical information and data, or this technical information and data conform to special applications, or this technical information and data does not infringe any rights of the user or third parties other than the user, or any other contents (including changes in contents for improvement of the specification and appearance of the product) thereof.

高亮度白色LED High brightness white LED

CL-A131 Series



2.5(L) ×
1.4(W) × 0.85(H)mm

●绝对最大额定值 Absolute Maximum Rating*1

(Ta 25°C)

产品代码 Product code	Pd (mW)	IF (mA)	IFP* (mA)	IR (mA)	Tj (°C)	Top (°C)	Tst (°C)
CL-A131-1W4-SD	345	100	200	90	140	-40~+100	-40~+105
CL-A131-1W5-SD	(495)	(150)	(200)	90	140		

* IFP的条件为duty 1/10, 脉冲宽度为0.1msec.

* Conditions for IFP are pulse of 1/10 duty and 0.1msec width.

●电气·光学特性 Electrical and Optical Characteristics

(Ta 25°C)

参数 Parameter		Symbol	Conditions	MIN	TYP	MAX	Unit
正向电压 Forward Voltage	CL-A131-1W4-SD	VF	IF=80mA	2.85	3.1	3.35	V
	CL-A131-1W5-SD		IF=80mA	(2.8)	(3.05)	(3.3)	
光通量 Luminous Flux	CL-A131-1W4-SD	φv	IF=80mA	—	(31)	—	lm
	CL-A131-1W5-SD		IF=80mA	—	(34.1)	—	
光强 Luminous Intensity*	CL-A131-1W4-SD	Iv	IF=80mA	8.75	10.8	12.64	cd
	CL-A131-1W5-SD		IF=80mA	(9.42)	(11.8)	(13.91)	
色度坐标 Chromaticity coordinates	CL-A131-1W5-SD	x	IF=80mA	—	0.277	—	—
		y		—	0.253	—	
	CL-A131-1W5-SD	x	IF=80mA	—	0.277	—	
		y		—	0.253	—	

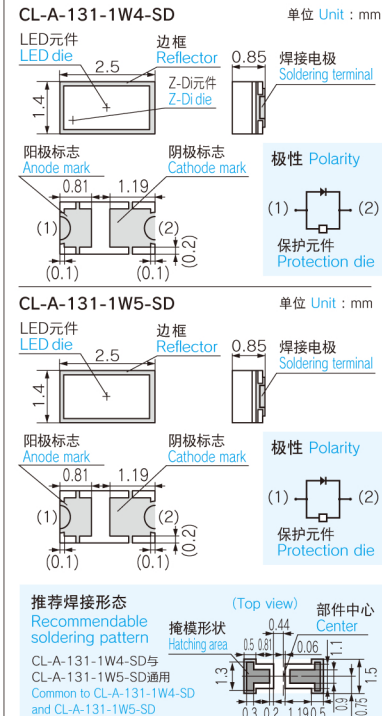
* 符合NIST标准 * Compliant with NIST standards

包装数量：3,000个/卷 (φ 180mm) Loaded quantity: 3,000pcs./1 reel (φ 180mm)

特征 Features

1. 背光光源用的白色LED
White LED for backlight source
2. 正面发光
Upward-lighting type
3. 搭载齐纳二极管, 防静电击穿性能佳。
Zener diode mounted for excellence in electrostatic withstand voltage

●外形尺寸图 Outline drawing



Introduction

CITILED

Technical note

Multi-color LED

High brightness white LED

General color LED

Flash LED