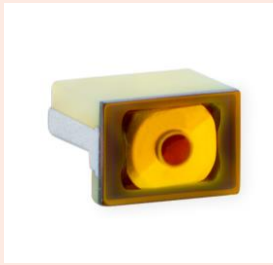


Precautions for use of Tactile switch products

- (1) When adopting the product for mass production, please exchange formal specifications with us.
- (2) Do not reverse-engineer the product including disassemble or analyze without our approval.
- (3) Please make sure to notify us in advance if you consider using the product for in-vehicle applications. Please use the product for in-vehicle applications within the scope of the specification. We will not guarantee damages you incurred by using the product for applications beyond the scope of the specification.
- (4) The product is not designed or manufactured to be used for special application (e.g. trains, ships, airplanes, spaceships, submarine repeaters, atomic energy control systems, traffic equipment, combustion equipment, medical devices, and safety devices). We will not guarantee any application suitability for goods like those described above that require special quality and reliability. In cases where the product is used in special applications and it causes extensive property damage, threatens human life or damages the human body, we will not be held liable.
- (5) When designing as a set where safety is important, make sure to consider the impact that a malfunction of a single switch has on the whole set, and ensure safety with a fail-safe design such as using a protection circuit or a protection device.
- (6) The specification and appearance of the product may change without notice for improvement, etc.
- (7) This technical information and data is provided for users as is, and we do not guarantee that it is free from errors or defect in technical information and data, or this technical information and data conform to special applications, or this technical information and data does not infringe any rights of the user or third parties other than the user, or any other contents (including changes in contents for improvement of the specification and appearance of the product) thereof.

LS185C Series

侧面按压型 Side-press type



特征 Features

1. 侧面装配型
Edge Mount type
2. 超小型·薄型
Ultra small and tin type
3. 防水, 可波峰焊
Waterproof, Reflow soldering
4. 带凸点
Built-in actuator

用途 Applications

- 智能手机、可穿戴设备
Smartphone, Wearable devices



产品代码 Product code

| | | | | | |
|--|-----------------------------------|--------------------------|--------------------------|---|--|
| LS185H | 4 | D | E | - | T |
| TACTILE SWITCH 通用编号 Common for TACTILE SWITCHes | 按压负荷 Operating force 4=2.4N | D=带凸点 D=With actuator | 侧面装配型 Edge mount type | | 包装方式 Delivery form T=编带 T=Tape and reel 无标记=批量 No coded=Bulk packing |

电气及机械特性 Electrical and Mechanical Characteristics

(Ta 25°C)

| 项目 Item | 规格 Specifications |
|----------------------------|------------------------------------|
| 最大额定值 Maximum rating | DC12V 20mA / DC12V 20mA |
| 接触阻抗 Contact resistance | 500mΩ以下 / 500mΩ or less |
| 绝缘阻抗 Insulation resistance | 100MΩ以上 / 100MΩ or more |
| 耐电压 Withstanding voltage | AC250V 1分間 / AC250V for one minute |
| 反弹 Bounce | 20ms以下 / 20ms or less |
| 行程 Stroke | 0.13mm / 0.13mm |
| 按压负荷 Operating force | 2.4N / 2.4N |
| 恢复力 Return force | 0.1N以上 / 0.1N or more |
| 动作寿命 Operating life | 30万回 / 300,000 |

外形寸法图 Outline drawing

单位:mm Unit : mm

